



A  D SolutionsTM
GREAT SOLUTIONS, GREAT RESULTS

PRODUCT CATALOG



MULTI-FUNCTION PRINTERS

SHARP MFPS

PERFORMANCE YOU CAN TRUST

HIGH PRODUCTIVITY

Out-of-the-box copy, print, scan and fax capabilities with standard cloud connect features and wireless networking enable users to easily manage their workflow from multiple devices.

ADVANCED SECURITY

Protect your organization's critical and confidential data assets with an extensive set of standard security features with remote management capabilities and optional Data Security Kits (DSKs).

USER FRIENDLY

Award-winning touchscreen displays offer a user-friendly graphical interface with simplified Easy Modes, integrated user guides and quick access to network services.

MFP & PRINTER MODELS

FEATURES



BP-50C31
31 ppm B&W and Color
networked digital MFP

- 100-sheet reversing single-pass feeder scans at up to 80 images per minute
- Flexible paper handling supports media up to 300 gsm
- Customizable paper feed and finishing options



BP-50C36
36 ppm B&W and Color
networked digital MFP

- 100-sheet reversing single-pass feeder scans at up to 80 images per minute
- Flexible paper handling supports media up to 300 gsm
- Customizable paper feed and finishing options



BP-50C45
45 ppm B&W and Color
networked digital MFP

- 100-sheet reversing single-pass feeder scans at up to 80 images per minute
- Flexible paper handling supports media up to 300 gsm
- Customizable paper feed and finishing options



MX-5071
50 ppm B&W and Color
networked digital MFP

- 150-sheet duplexing single pass document feeder
- 500GB hard disk drive
- Automatic walk-up motion sensor
- Customizable paper feed and finishing options



DX-B352P
35 ppm desktop monochrome
printer

- 1,200 x 1,200 dpi print resolution
- Automatic two-sided function for duplex printing
- Easily print documents from mobile devices
- Single toner and drum supply component



MX-B350W
35 ppm B&W desktop
MFP

- Standard copy, print, scan and fax functionality out of the box
- 50-sheet reversing single pass feeder scans up to 40 images per minute
- Scanning/printing from mobile devices



MX-C407P
40 ppm B&W and Color
desktop printer

- 1,200 x 1,200 dpi print resolution
- 4.3 inch touchscreen display
- Automatic two-sided function for duplex printing
- Easily print documents from mobile devices



MX-C407F
40 ppm B&W and Color
networked digital MFP

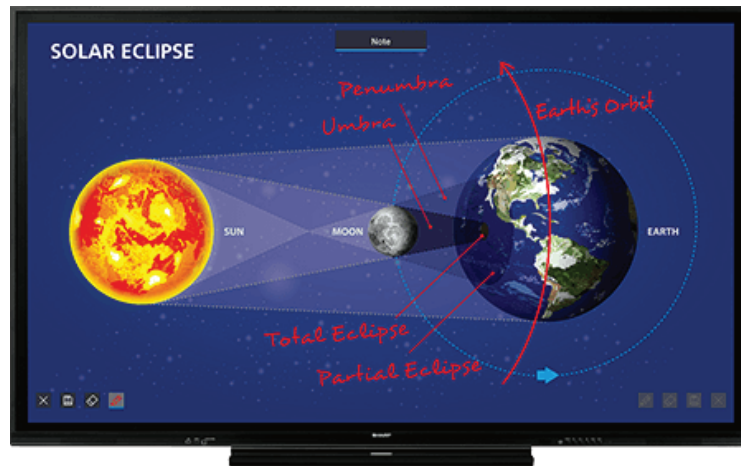
- Out-of-the-box copy, print, scan and fax capability
- 50-sheet reversing single pass document feeder
- 7-inch touchscreen display
- Scan and print files easily from mobile devices

SHARP AQUOS BOARD

INTERACTIVE DISPLAYS

4K ULTRA-HD QUALITY

Immerse your audience with spectacular image and video quality that produces highly realistic sensations and detailed accuracy.



SIMULTANEOUS WRITING

Keep everyone actively involved with multiple touchpoints that allow up to four people to use a touchpen or finger to add their creative input at the same time.

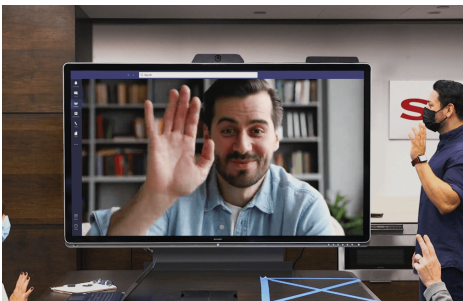
SHARP DISPLAY CONNECT

Share content on your Interactive Display Device, including handwritten notes and files simultaneously with up to 50 devices.

70", 80" & 86" Displays Available.

Sharp Aquos Board Interactive Display systems are designed for smooth and effortless communication in a wide range of contexts. From the office boardroom to the conference room, training session to lecture hall, the Sharp Aquos board can motivate your audience, boost productivity, and magnify the impact of your presentation. Designed to fulfill your spatial needs, the Aquos Board can be mounted or accompanied with a rolling cart stand.

CONFIGURE YOUR DISPLAYS WITH UNLIMITED CREATIVITY



WINDOWS COLLABORATION DISPLAY (WCD)

Certified to meet Microsoft Conference Room standards, WCD is designed to fully integrate with video conferencing and popular Microsoft tools like Office 365 and Teams.



SHARP NEC DISPLAY SIGNAGE

Deliver maximum impact to your customers' messaging with an outstanding interactive signage experience, providing precise touch responses and natural visibility. Perfect for office, retail stores, showrooms and more.



SHARP/NEC DIRECT VIEW LED VIDEO DISPLAY

Capture attention and provide vivid, high-contrast images that are viewable in superb clarity from any viewing distance with our Direct View LED displays. Customizable to fit virtually any application.



DIRECT VIEW VIDEO WALLS

FIND YOUR CUSTOM SOLUTION

We evaluate your display solution ideas and advise you on how to best maximize the impact of your vision. Our engineers create a detailed plan and design to build the ideal LED display solution for your project, and ensure that it is completed on time and within budget.



FULLY SCALABLE & CONFIGURABLE

Capture attention in any environment with Ultra-narrow bezel LCDs that create a virtually seamless design in any space. Configure multiple screen video walls in virtually any shape.



MOBILE MESSAGING

Move your messaging where it's needed with a free-standing message board, robust enough for public spaces. It can be easily integrated into walls with its removable stand and slim depth.



SEAMLESS DISPLAY

No lines in the middle of the image of the video wall allows creators to create content without the worry that text or important imagery will be obscured by the seam of a video wall.



DYNABOOK LAPTOPS

BUILT-IN QUALITY, RELIABILITY & DURABILITY



EDUCATIONAL LAPTOPS PORTABILITY & PRODUCTIVITY

With a customizable feature-rich lineup, Dynabook Laptops are built to withstand the rigors of any campus, equipped with educational solutions for students, teachers and industry professionals.



E10 EDU

- Celeron N4020
- 4 GB RAM
- 128 GB eMMC
- Win 10 Pro Education
- 11.6" Display



TECRA A40 EDU

- Celeron 5205U
- 4GB RAM
- 128 GB SSD
- Win 10 Pro Education
- 3.25 lbs
- 14" Display
- 1366 x 768 (HD)



TECRA A40 ESS

- Intel Core i5-1135G7
- 8GB RAM
- 256GB SSD
- Win 10 Pro
- 3.25 lbs
- 14" Display
- 1366 x 768 (HD)

ONYX

INTEL i7 WINDOWS 10 PRO PC



COMPACT HIGH PERFORMANCE SMART PC



Command all the power and functionality of a desktop computer in a compact, stylish chassis powered by the Intel Core i7-7700HQ quad core processor. Its powerful graphics card renders HD picture quality, with HDMI and Display Ports to support 4K technology. With support for 2.4Ghz and 5Ghz band, it can transmit higher amounts of data at incredibly fast speeds.

ONYX SMART PC KEY FEATURES

- Intel QUAD-CORE I7-7700HQ Processor
- 8 GB RAM 3200MHz RAM Samsung
- 256GB M.2 SSD Hard Drive Samsung
- Win 10 Professional (64 bit)
- 5G Built-In WiFi | Dual Antenna
- HDMI/DP with 4K Support
- Embedded Intel HD 630 Graphics

WHAT'S IN THE BOX

- ONYX DP-I7 Smart PC
- Power Adapter
- HDMI Cable
- ONYX 1 Year Limited Warranty

ADVANCED AI TECHNOLOGY

SMART ACCESSORIES



SMART TEMP DYNAMIC DETECTION DISPLAY

Provide real-time protection and peace of mind for your organization and its customers. Non-touch scanning and facial recognition features allow you to safely deny or accept entry into your organization. Customize your display to mount in a variety of settings.



EDUCATION TRACKING CAMERA

Track instructor movements with intelligent auto-tracking software.

- 12x Optical Zoom
- 2nd Panoramic Lens for Classroom View
- 2x HDMI, 2xLANx USB 3.0 ports
- Advanced Tracking Algorithms
- 1920 x1080 @ 60fps



AUTO-FRAMING CONFERENCE CAMERA

Automatically frames all people in a meeting into a single frame using artificial intelligence (AI).

- USB 3.0 port
- EPTZ and 4X Digital Zoom
- Supports 4K Ultra HD @ 30fps
- Antique Noise Suppression Algorithm Ensures Your Voice To Be Heard Perfectly



VOIP SYSTEMS

NEVER MISS A CALL

Voice Over Internet Protocol's (VOIP) customizable features fit the needs of every department. The voice recording feature is great for training and quality assurance purposes and the VOIP mobile app keeps you connected to your business when you're on the go. Easy to set-up, all you need is a phone and an internet connection. Technical Support Staff is on-call for when you need help.



ESSENTIAL SEAT FEATURES

- Unlimited US & Canada calling
- Auto Attendants
- Call Queues
- Call Recording
- Ring Group
- Mobile Application (Softphone)
- Caller ID
- Directory Assistance
- 70+ Features



ADVANCED SEAT FEATURES

- Everything in Essential Seat package
- International Calling
- Voicemail Transcription
- Native Fax Digital Faxing
- SMS



SOFTWARE SOLUTIONS

OPTIMIZE YOUR DOCUMENT WORKFLOWS

PROGRAM

FEATURES



DOCUWARE

Automate document workflows and protect data and documents with secure, centralized archiving.

- Intelligent Indexing
- Mobile Upload & Access
- Scan and Classify
- Flexible Search
- Barcode Recognition
- Digital Editing
- Sophisticated Permissions



PAPERCUT

Manage your print environment to minimize waste while having a secure and easy printing experience.

- Visible/Silent Activity Monitoring
- Quota/Allowance Enforcement
- Charge Per-Print System
- Detailed logging & Reporting
- Print Notifications
- Flexible Hold/Release Queue
- Cross-Platform & Multi-Platform Support



SYNAPPX

Synappx applications work with your current office technology to bring smart home convenience to the workplace.

- Auto-Connect to Web Conference Applications
- Auto-Mirror PC for Meetings
- Mobile Application with Synappx Go
- Mobile Print Release
- Track Workplace Utilization
- Integrates with MFPs & Interactive Displays
- Layered Security System Protection

NETWORK SOLUTIONS

MANAGED IT SERVICES



DEDICATED HELPDESK

AD Solutions is a reliable partner who can manage software support, administrator technology on multiple platforms, keep applications up to date and available, manage crises when service interruptions occur and provide 24/7 support on hardware components and software systems.



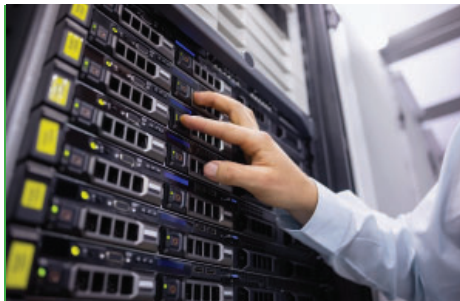
REMOTE SUPPORT

Our proactive IT Consultants provide remote monitoring and management 24/7, 365 days a year. Our service desk resources are trained to troubleshoot and provide information and support for all of our products and services through various channels.



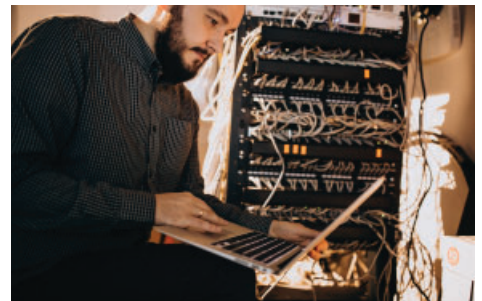
CYBER SECURITY

We offer comprehensive cybersecurity solutions to help you protect your business network, data, and documents from cyber attacks and hackers.



DATA BACKUP & RECOVERY

With cyber attacks on the rise, stay prepared in an emergency with our optional cloud-based data backup and recovery solutions.



PROJECT-BASED SUPPORT

Whether you need us to build your IT infrastructure from the ground up, or your IT staff just needs a helping hand, our team is available to meet your needs.



653 W Michigan St, Orlando, FL 32805
(407) 412-6929 . www.myadsusa.com
Orlando. Jacksonville. Melbourne

A.D. Solutions is a professionally managed, privately held company with a history of exceptional customer service. We empower our clients to manage and develop sophisticated capabilities to handle the entire paper process from creation to destruction.