

Software setup guide

First check the following items:

[▶ P. 5](#)

With Windows

[▶ P. 12](#)

With Macintosh

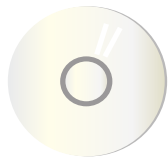
[▶ P. 41](#)

Troubleshooting

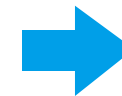
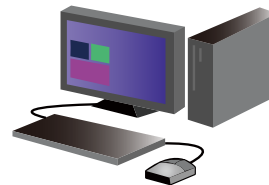
[▶ P. 45](#)

Setup procedures

STEP1
Get the CD-ROM ready



STEP2
Install software



Ready!
Start printing!



Introduction

Thank you for purchasing this product.

This manual provides information on installing and setting up of necessary software such as the printer function to use this product from your computer. It also explains how to install the printer driver and software when the expansion kit is attached, and how to install the scanner driver.

When the software is not installed correctly, or if you want to delete the installed software, please refer to "[Troubleshooting P.45](#)".

Prerequisite

- This manual assumes that the trainer/user has practical knowledge about Windows and Macintosh computers.
- For items concerning the OS (operating system), please refer to the OS manual or help.
- In this manual, Windows 8® is used for the Windows® environment, and Mac OS X 10.10 is used for the Macintosh environment for screen shots and operation. The screen shots may differ depending on the version of the OS (operating system).
- In this manual, where MX-xxxx is described, please replace that with your model.
- In this manual, it is assumed that the digital full color multifunctional system is mainly used, and is described as SPDL2-c. In case of a black and white digital multifunctional system, please read SPDL2c as SPDL2.
- Considerable care has been taken in preparing this manual. If you have any comments or concerns about this manual, please contact your nearest SHARP Customer Support Center.
- This product has undergone strict quality control and inspection procedures. In the unlikely event that a defect or other problem is discovered, please contact your dealer or nearest SHARP Customer Support Center.
- Aside from instances provided for by law, SHARP is not responsible for failures due to incorrect operation of the product and its options, or for any damage that occurs due to the use of the product by the user or a third party.

Caution

- You may not transfer or copy all or part of this manual without notifying the company.
- The contents of this manual may change without notice for improvement purposes.
- Please use shielded cables which conform to specifications for network cables connected to this machine.

Illustrations, operation panels and touch panels used in the manual

- As a rule, peripherals are optional. However, depending on the type of machine, some peripherals are included. In this manual, the paper feeder is fixed to the printer. When explaining the functions and use of this printer, there are instances where the connected peripherals are different to the above.
- The operation screens, messages, and key names shown in the manual may differ from those on the actual machine due to product improvements and modifications.

Information on software version updates and support

- Software such as the printer driver may be updated. Please refer to our home page for latest software and support information.
- You will be deemed to have accepted the software license agreement on the homepage when you use the downloaded software.

Software license agreement

- When the software is installed using the provided CD-ROM, the software license agreement is displayed. You will be deemed to have accepted the conditions of the software license agreement when you use the software on the CD-ROM on this machine.

Table of contents

First check the following items P.5

"Software CD-ROM" included in this machine P.6
CD-ROM provided with the extension kit P.7
Operating environment of the computer P.8
Conditions of software use P.10
How to connect this machine P.11

Windows/Installing the printer P.12

Standard install (Unified installer) P.13
Display the software selection screen (common procedure) P.15
Installing connected to the network P.16

- Quick install P.17
- Standard installation P.19
- Custom install P.21
- Installing with specified addresses P.22
- Using the IPP function or SSL function to print P.25

Installing others P.27

- Setup for sharing printers P.28
- Installing the driver only P.30
- Enable options and peripherals P.31
- Changing ports P.32

Windows/Software install P.34

Install status monitor P.35
Install the scanner driver P.36
Install Network scanner tool Lite P.38

Macintosh/Installing the printer P.40

Installing the printer driver on Mac OS X P.41
Using the IPP function to print P.44

Troubleshooting P.45



Cannot install P.46
Problem with Windows P.47
Trouble with Macintosh P.49
How to setup this machine P.50

First check the following items

For a problem free setup, please check the properties and conditions of use of necessary software.

CD-ROM and software

The software is included in the CD-ROM provided with the machine, or included in the CD-ROM provided with the extension kit.

- "Software CD-ROM" provided for this machine  P.6
- CD-ROM provided with the extension kit  P.7

Operation environment

Check the operation environment of your computer and conditions of use of the software, then install.

- Operating environment of the computer  P.8

How to connect this machine P.11

The machine and the printer is connected by LAN.

"Software CD-ROM" included in this machine

The following software, including the printer driver and scanner driver, are included in the "Software" CD-ROM.

Software for Windows

Printer driver

This is used to control this machine.

- SPDL2-c printer driver: Corresponds to the page description language SPDL2, provided by SHARP.
- PS printer driver: Corresponds to the page description language PostScript 3, developed by Adobe Systems.
- PPD Driver: This is a driver for using the Windows standard PS printer driver.

PC-Fax Driver

This driver sends data on a computer by fax. Update using the CD-ROM P.7 provided in the Internet fax expansion kit to enable internet fax.

Printer status monitor

With this software, it is possible to check the print status, existence of a finisher, paper size, and remaining paper on the computer screen.

Scanner driver (TWAIN driver)

This driver enables scanner function using the TWAIN standard application software.

Network scanner tool Lite

This enables automatic storage of scanned data on a computer folder, and sending them by email.

Software for Macintosh

PPD driver

This is a printer description language that can be used with page description language PostScript 3, developed by Adobe Systems.

Related topics

- CD-ROM provided with the extension kit P.7
- Operating environment of the computer P.8
- Conditions of software use P.10
- How to connect this machine P.11
- Windows/Installing the printer P.12
- Windows/Software install P.34
- Macintosh/Installing the printer P.40

Troubleshooting

- Cannot install P.46

CD-ROM provided with the extension kit

The following software is included in the CD-ROM provided with the extension kit.

"Printer utility" CD-ROM provided with the Internet fax extension kit (For Windows)

This CD-ROM is used to update the "Software CD-ROM" P.6 provided with this machine so that Internet fax is enabled (PC Internet fax function).



- To use the PC Internet fax function, first install the PC-Fax Driver included in the "Software CD-ROM", then update with the "Printer utility" CD-ROM. How to install the PC-Fax Driver ⇒ [Windows/Installing the printer P.12](#).

Related topics

- "Software CD-ROM" included in this machine P.6
- Operating environment of the computer P.8
- Conditions of software use P.10
- How to connect this machine P.11
- Windows/Installing the printer P.12
- Windows/Software install P.34
- Macintosh/Installing the printer P.40

Troubleshooting

- Cannot install P.46

Operating environment of the computer

Before installing the mentioned software, check that your computer satisfies the conditions below: It cannot be used with an IPv6 only network.

Windows

1. Operating system

Windows Vista, Windows Server 2008, Windows 7, Windows 8, Windows8.1 (or higher, includes 32 bit/64 bit version OS), Windows Server 2012

- Starter edition and embedded OS are not supported. Other editions and Service Packs are supported, but we recommend that the Service Pack be updated to the latest version.

2. Type of computer

IBM PC/AT compatible machine Models which are equipped with a LAN board that can be used with 10Base-T/100Base-TX/1000Base-T

- It can be used with some models with wireless LAN function.

3. Display

Recommend display capacity of resolution 1026 x 768 dots and 16 bit color or higher

4. Other hardware environment

Environment where the above OS can sufficiently function

- An administrator's right is necessary to follow this manual, such as installing software and then setup.

Related topics

- "Software CD-ROM" included in this machine P.6
- CD-ROM provided with the extension kit P.7
- Conditions of software use P.10
- How to connect this machine P.11
- Windows/Installing the printer P.12
- Windows/Software install P.34
- Macintosh/Installing the printer P.40

Troubleshooting

- How to check the IP address of this machine P.50

Macintosh

1. Operating system

For Mac OS X 10.4
For Mac OS X 10.5
For Mac OS X 10.6
For Mac OS X 10.7
For Mac OS X 10.8
For Mac OS X 10.9
For Mac OS X 10.10

- With Macintosh, the printer can only be used when this machine is connected to the network. It cannot be used for PC-Fax Driver, scanner driver, printer status monitor, network scanner tool Lite .

2. Type of computer/display/other hardware/environment

Environment where the above OS can sufficiently operate (including Macintosh with Intel processors)

- It can be used with some models with wireless LAN function.

Related topics

- "Software CD-ROM" included in this machine P.6
- CD-ROM provided with the extension kit P.7
- Conditions of software use P.10
- How to connect this machine P.11
- Windows/Installing the printer P.12
- Windows/Software install P.34
- Macintosh/Installing the printer P.40

Troubleshooting

- How to check the IP address of this machine P.50

Conditions of software use

The software explained in this manual can be used when the following conditions are satisfied:

Software for Windows

SPDL2-c printer driver

Can be used in a standard state.

- Depending on the model used, a printer expansion kit is necessary.

PS printer driver, PPD driver

Can be used in a standard state.

- Depending on the model used, a printer expansion kit is necessary.

PC-Fax Driver

Can be used in a standard state.

- Depending on the model used, a fax expansion kit is necessary.

Scanner driver, printer status monitor

Can be used in a standard state.

Network scanner tool Lite

Can be used in a standard state.

Software for Macintosh

PPD driver

Can be used in a standard state.

- Depending on the model used, a printer expansion kit is necessary.

Related topics

- "Software CD-ROM" included in this machine P.6
- CD-ROM provided with the extension kit P.7
- Operating environment of the computer P.8
- Conditions of software use P.10
- How to connect this machine P.11
- Windows/Installing the printer P.12
- Windows/Software install P.34
- Macintosh/Installing the printer P.40

Troubleshooting

- Cannot install P.46

How to connect this machine

This explains how to connect this machine.

Network connection

Connect a LAN cable (shield type) to the network connector.

After connection and before installing the software, setup the network, such as setting the IP address. Setup of the network is done using the "Network setup" of this machine.

- At factory default, when this machine is used in a DHCP environment, it is setup so that an IP address is automatically allocated.
- When this machine is used in a DHCP environment, the IP address may be changed and it may not be possible to print. Operate the WINS server or fix the IP address to use the printer.
- When using models with wireless LAN, please refer to the provided manual for setup.

Related topics

- "Software CD-ROM" included in this machine P.6
- CD-ROM provided with the extension kit P.7
- Operating environment of the computer P.8
- Conditions of software use P.10
- Windows/Installing the printer P.12
- Windows/Software install P.34
- Macintosh/Installing the printer P.40

Troubleshooting

- Cannot install P.46

Windows/Installing the printer

"Standard install" is recommended for installing the printer driver. It is possible to setup network scan tool Lite with Standard install.

So easy! Install together

Standard install (Unified installer)

[▶ P.13](#)

The standard printer driver and the network scanner tool Lite are installed at the same time to the machine connected by LAN.

Install necessary software individually

Installing connected to the network

[▶ P.16](#)

Install the printer driver or PC-Fax driver to the machine connected by LAN.

Installing others

[▶ P.27](#)

This section describes detailed ways of setup, such as installing the driver only.

Display the software selection screen (common procedure)

1. Startup the "Software CD-ROM"

Insert the "Software CD-ROM" into the CD-ROM drive and double click the [CD-ROM] icon.

- If the icon is not displayed, right click at the start screen (or swipe upwards from the lower edge) → App bar → [All applications] → [Computer] → Double click [CD-ROM].
- When using Windows 7, select [Start] → [Computer], and double click the CD-ROM icon.

2. Double click the [SETPUP] icon

The "Software license agreement" screen is displayed.

- When the confirmation message is displayed, click [Yes] or [Allow]

3. Confirm the content and click the [Yes] button

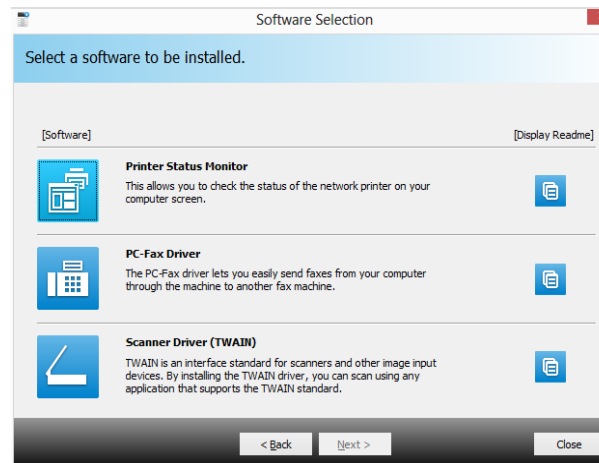
The [Read first] screen is displayed.


4. Confirm the content and click the [Next] button

The [Choose setup type] screen is displayed.

5. Select [Individual install]

The "Software selection" screen is displayed. For steps hereon, please refer to the individual procedures.



- By clicking the [Display details] button () , the details of the software to be installed are displayed.

Related topics

- "Software CD-ROM" included in this machine P.6
- Windows/Installing the printer P.12
- Install status monitor P.35
- Install the scanner driver P.36

Troubleshooting

- Cannot install P.46
- Problem with Windows P.47

Installing connected to the network

Installing starts here!

Display the software selection screen (common procedure)

P.15

When quick install and standard install is used, it is installed as below: To select the driver, use "Standard install", otherwise, use "Custom install".

	Quick install	Standard installation
How to connect	LPR direct (automatic search)	LPR direct (automatic search)
Printer driver	SPDL2-c	Select from SPDL2-c, PS, PPD
Setup as printer normally used	Is setup※1	Is setup※1
Name of printer driver	Cannot change	Cannot change
Display font for SPDL2-c printer driver	Will not install	Will not install※2

※1 Will not be setup for the PC-Fax driver.

※2 Only when installing the SPDL2-c, PS printer driver or PPD driver.

Notice

- This manual mainly explains the printer driver. However, the PC-Fax driver is also installed in a similar manner.
- The PS printer driver, PPD driver can be used in standard configuration. However, depending on the model, the printer expansion kit is necessary.

Quick install

P.17

Quickly installs the SPDL2-c printer driver.

Standard installation

P.19

Selects the printer driver to install.

Custom install

P.21

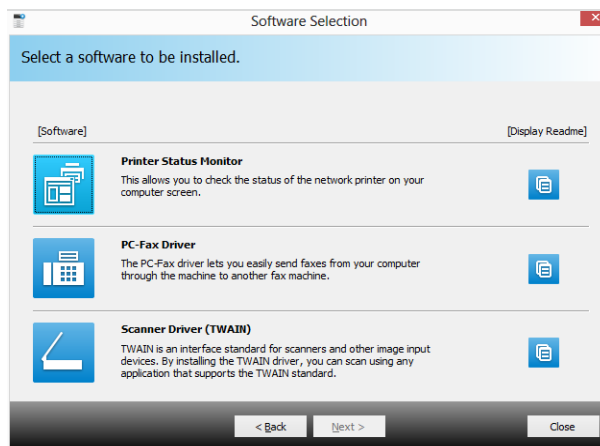
Detailed setup such as specifying the IP address or IPP function/SSL function.

Quick install

1. Display the "Software selection" screen

Refer to "Display the software selection screen (common procedure) P.15" on how to display the "Software selection" screen.

2. Click the [Printer driver] button



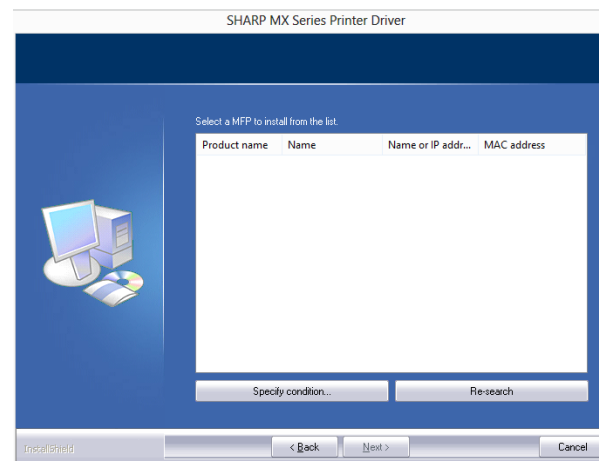
When installing the PC-Fax Driver, click the [Support tool 1] button, then click the [PC-Fax Driver] button.

3. Click the [Quick install] button

Printers connected to the network are detected.

4. Select this machine, and click the [Next] button

When you click the [Specify conditions] button, you can input the name of this machine (host name) or IP address, change the time out time, and search.



The confirmation screen is displayed.

As a result of the search, if only one instance of this machine is found, this screen is not displayed.

Related topics

- Display the software selection screen (common procedure) P.15
- Standard installation P.19
- Custom install P.21
- Setup for sharing printers P.28
- Installing the driver only P.30

Troubleshooting

- Cannot install P.46
- Cannot detect this machine P.47
- How to check the IP address of this machine P.50

Standard installation

1. Display the "Software selection" screen

Refer to "Display the software selection screen (common procedure) P.15" on how to display the "Software selection" screen.

2. Click the [Printer driver] button

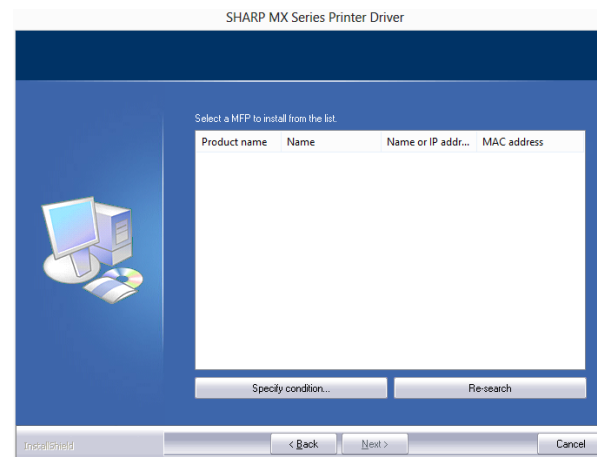
- When installing the PC-Fax Driver, click the [Support tool 1] button, then click the [PC-Fax Driver] button.

3. Click the [Standard install] button

Printers connected to the network are detected.

4. Select this machine, and click the [Next] button

When you click the [Specify conditions] button, you can input the name of this machine (host name) or IP address, change the time out time, and search.



- As a result of the search, if only one instance of this machine is found, this screen is not displayed.

Related topics

- Display the software selection screen (common procedure) P.15
- Quick install P.17
- Custom install P.21
- Installing others P.27

Troubleshooting

- Cannot install P.46
- Cannot detect this machine P.47
- How to check the IP address of this machine P.50

Custom install

Custom install is used to make detailed configuration. Two ways of installation are explained below:

Installing with specified addresses

▶ P.22

Even when the printer is not powered up and cannot be searched, you can install the printer driver by inputting the name (host name) or IP address of the machine.

Using the IPP function or SSL function to print

▶ P.25

Using the IPP function, even when the printer is placed remotely, it can be used as a fax machine and high quality print is possible. By using the SSL function at the same time, encrypted data can be sent.

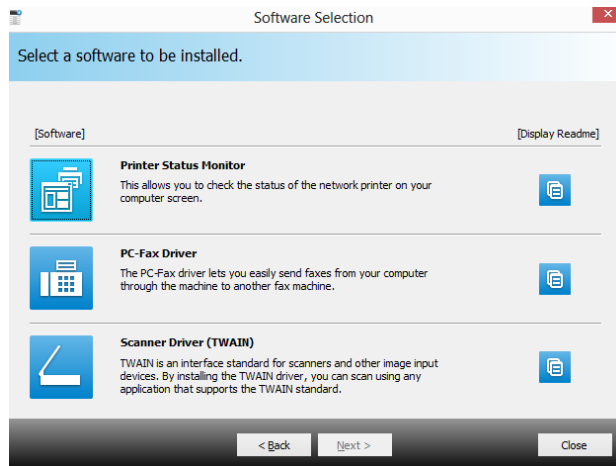
Using the IPP function or SSL function to print

To use the SSL function, please setup the "SSL configuration" of this machine. For instructions, please download the manual from the website.

1. Display the "Software selection" screen

Refer to "Display the software selection screen (common procedure) P.15" on how to display the "Software selection" screen.

2. Click the [Printer driver] button



When installing the PC-Fax Driver, click the [Support tool 1] button, then click the [PC-Fax Driver] button.

3. Click the [Custom install] button

A screen to check how this machine is connected is displayed.

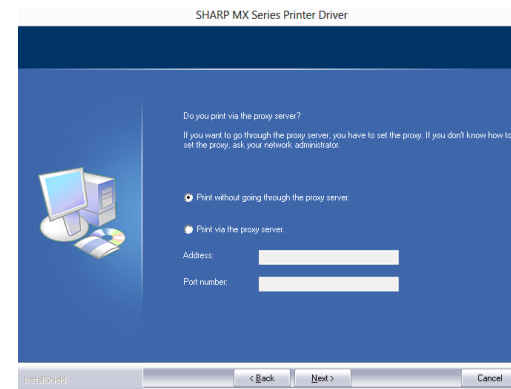
4. Choose [JPP], and click the [Next] button

The proxy server setup screen is displayed.

5. Setup the proxy server

When printing via the proxy server, setup as below:

- 1) Choose [Print via the proxy server].
- 2) Input the "Address" and the "Port No.," then click the [Next] button.



The URL input screen is displayed.

Related topic

- Display the software selection screen (common procedure) P.15
- Installing with specified addresses P.22

Troubleshooting

- Cannot install P.46

Installing others

The method to share the printer with several computers connected by LAN, and enabling options and peripherals after installation are explained.

Display the software selection screen (common procedure)

▶ P.15

Setup for sharing printers

▶ P.28

You can print from multiple computers connected by LAN.

Installing the driver only

▶ P.30

Even if the printer is not connected to LAN, it is possible to install the printer driver.

Done before or after installation

Enable options and peripherals

▶ P.31

When the printer driver is installed, enables options or paper size setup.

Changing ports

▶ P.32

When the IP address of the machine is changed, you must change the port.

Setup for sharing printers

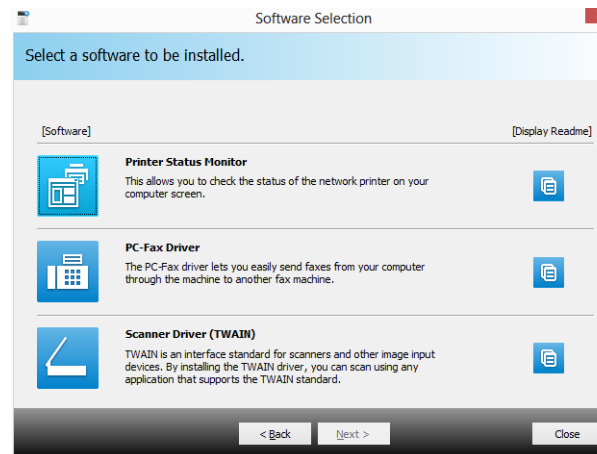
When using a printer or a computer with PC-Fax installed as a printer server, install the printer driver on the client computer as follows:

- Please note that in this section, the computer connected directly to this machine is called a printer server, and computers on the same network, which are not the printer server, are called the client.
- To setup the printer server side, refer to the individual OS manuals or Help.
- The PC-Fax printer driver can also be setup to be shared, using the same procedures as the printer driver.
- Please ask the network administrator for the name of the server on the network, and the name of this printer.

1. Display the "Software selection" screen

Refer to "Display the software selection screen (common procedure) P.15" on how to display the "Software selection" screen.

2. Click the [Printer driver] button



When installing the PC-Fax Driver, click the [Support tool1] button, then click the [PC-Fax Driver] button.

3. Click the [Custom install] button

A screen to check the connection is displayed.

Related topics

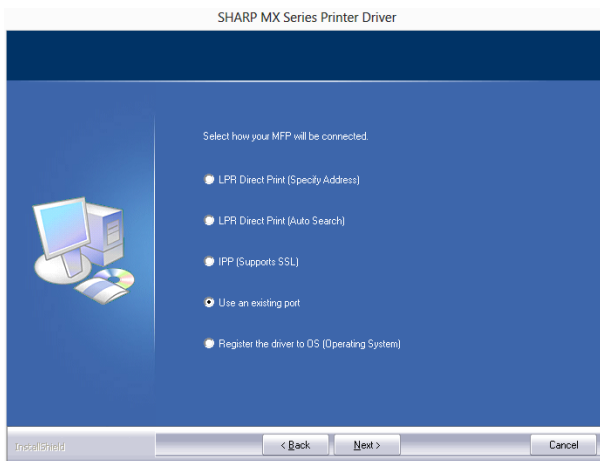
- How to connect this machine P.11
- Display the software selection screen (common procedure) P.15
- Windows/Installing the printer P.12

Troubleshooting

- Cannot install P.46
- Problem with Windows P.47

4. Select [Use existing port].

Select [Use existing port], and click the [Next] button.



The port selection screen is displayed.

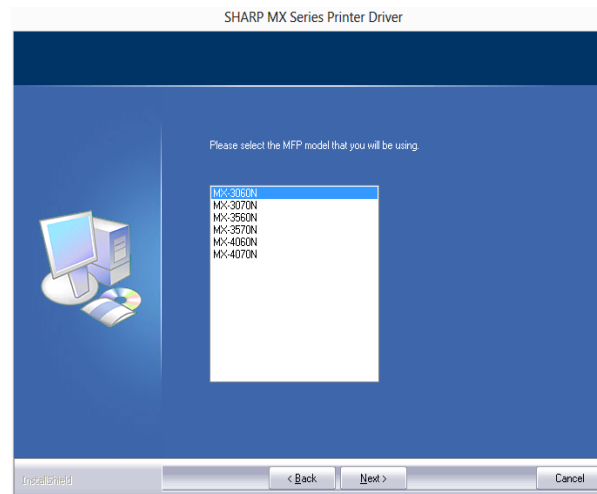
5. Select the port

The printer name selection screen is displayed.

6. Select the printer name from the list

From the list, select the printer that was setup as a shared printer from the printer server side, then click the [Next] button.

- When installing the PC-Fax Driver, this procedure is not displayed. Proceed to the next step.



7. Proceed with installation

Follow the steps 6 - 13 of "Installing with specified addresses P.22", and proceed with installation

On the client side computer, install the same printer driver server as the printer server side. Now the install procedure is complete.

Related topics

- How to connect this machine P.11
- Display the software selection screen (common procedure) P.15
- Installing with specified addresses P.22

Troubleshooting

- Cannot install P.46
- Problem with Windows P.47
- How to check the IP address of this machine P.50

Installing the driver only

It is not possible to install only the driver on a PC-Fax Driver. The menu will only show the printer driver.

1. Display the "Software selection" screen

Refer to "Display the software selection screen (common procedure) P.15" on how to display the "Software selection" screen.

2. Click the [Printer driver] button

3. Click the [Custom install] button

A screen to check the connection is displayed.

4. Select [Register the driver to this computer].

Select [Register the driver to this computer], then click the [Next] button. The confirmation screen is displayed.

5. Confirm the content of the screen, and click the [Next] button

The install confirmation screen is displayed.

6. Click [Install]

Installation begins. When the complete screen is displayed, click [Complete].



- If a warning window regarding security is displayed, do not forget to click [Install].

Related topics

- Display the software selection screen (common procedure) P.15
- Windows/Installing the printer P.12

Troubleshooting

- Cannot install P.46
- Problem with Windows P.47

Enable options and peripherals

1. Display [Device and printer]

Right click at the start screen (or swipe upwards from the lower edge) → App bar → Click [All applications] → [Control panel] → [Hardware and sound] → [Device and printer].

- For Windows 7, click [Start] → [Control panel] → [Hardware and sound] → [Device and printer].

2. Display the property screen of the printer

Right click the printer driver icon of this machine, then select [Printer property].

3. Click the [Option] tab

4. Click the [Option automatic setup] button

This detects the condition of the machine and conducts automatic setup. In addition, depending on the detected condition, the image of the machine displayed on the printer driver setup screen is automatically generated.

5. Click the [OK] button of the printer property screen

- When using the PPD driver, when the "Printer property screen" is displayed in step 2, follow the steps below:
 - 1) Click the [Device setup] tab.
 - 2) Check the state of the peripherals of the machine, and setup the items accordingly. The items to setup and the method varies depending on the OS version.

Related topics

- Windows/Installing the printer P.12

Troubleshooting

- Cannot install P.46
- Problem with Windows P.47
- The options and peripherals of this machine could not be automatically setup P.47
- I want to check the status of the peripherals P.50



Changing ports

1. Display [Device and printer]

Right click at the start screen (or swipe upwards from the lower edge) → App bar → Click [All applications] → [Control panel] → [Hardware and sound] → [Device and printer].

- For Windows 7, click [Start] → [Control panel] → [Hardware and sound] → [Device and printer].

2. Display the property screen of the printer

Right click the printer driver icon of this machine, then select [Printer property].

3. Add or change the port

Click the [Port] tab, then click the [Add port] button.
The "Port type selection" screen is displayed.

- To change to an existing port, select the port from the list and click the [Apply] button.

4. Select [Standard TCP/IP Port]

Select [Standard TCP/IP Port], then click the [New port] button.

5. Click the [Next] button

The "Add port" screen is displayed.

6. Input the IP address of this machine.

Input the name of this machine (host name) or IP address, then click the [Next] button.

The "Additional port information input" screen is displayed.

Related topics

- Installing the driver only P.30

Troubleshooting

- Problem with Windows P.47
- How to check the IP address of this machine P.50



7. Select [Custom], and click the [Next] button

The "Port setup" screen is displayed.

8. Setup the port

Choose either of the below and click the [OK] button.

- [Protocol]Raw/[Port No.]9100
- [Protocol]LPR/[Queue name]lp

Configure Standard TCP/IP Port Monitor

Port Settings

Port Name: 172.25.9.195

Printer Name or IP Address: 172.25.9.195

Protocol

Raw LPR

Raw Settings

Port Number: 515

LPR Settings

Queue Name: lp

LPR Byte Counting Enabled

SNMP Status Enabled

Community Name: public

SNMP Device Index: 1

OK Cancel

9. Click the [Next] button of the step 4 screen

10. Click the [Complete] button

11. Click the [Close] button on the step 1 screen



- When using a port created by an OS standard "Standard TCP/IP Port", click the [Port configuration] button on the step 3 screen and set the [Enable SNMP status] checkbox to . If it is set to , the printer may not function correctly.

Related topics

- Installing the driver only P.30

Troubleshooting

- Problem with Windows P.47
- How to check the IP address of this machine P.50

Windows/Software install

This section explains how to install software so that the machine can be easier to use.

Display the software selection screen (common procedure)

[▶ P.15](#)

Install status monitor [▶ P.35](#)

It is possible to check the print status, existence of a finisher, paper size, and remaining paper on the computer.

※ Can only be used when connected to LAN.

Install the scanner driver [▶ P.36](#)

Can scan images directly from TWAIN standard application.

※ Can only be used when connected to LAN.

Network scanner tool Lite [▶ P.38](#)

You can use handy functions such as attaching scanned images to your email.

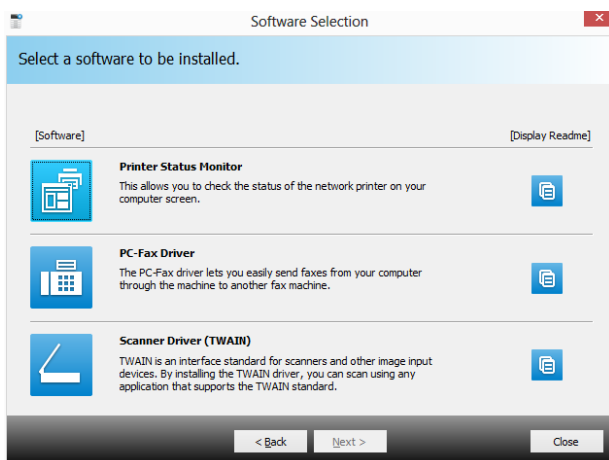
Install status monitor

Status monitor cannot be used when the IPP function is used.

1. Display the "Software selection" screen

Refer to "Display the software selection screen (common procedure) P.15" on how to display the "Software selection" screen.

2. Click the [Support tool 1] button



3. Click the [Printer status monitor] button

Click the [Display details] button before installation and make sure that you confirm the details of the software.

4. Follow the instructions on the screen and proceed with installation

Confirm the content of the screen, and click the [Next] button. The install complete screen is displayed.

5. Click the [Complete] button

Select [Register at startup] and click the [Complete] button. The printer status monitor starts up automatically when the computer boots.

6. Close the "Software selection" screen

Click [Close].

Now the install procedure is complete.

After the install procedure is complete, a message prompting restart may be displayed. In this case, click the [Yes] button and restart the computer.

- Refer to help for operation.
- Select in the following order: Windows [Start] button → [All programs] → [SHARP printer status monitor] → [Help].

Related topics

- "Software CD-ROM" included in this machine P.6
- Operating environment of the computer P.8
- Conditions of software use P.10
- Display the software selection screen (common procedure) P.15
- Windows/Installing the printer P.12

Troubleshooting

- Cannot install P.46
- Problem with Windows P.47
- How to setup this machine P.50

Macintosh/Installing the printer

This section explains how to install and setup the printer driver when using this machine in a Macintosh environment.

Installing the printer driver on Mac OS X

Installs the PPD driver necessary to print from a Macintosh computer.

▶ P.41

Using the IPP function to print

You can use the machine like a fax, by printing data on a machine placed remotely.

▶ P.44

Warning

- Depending on the model used, a printer expansion kit is necessary.
- You cannot use the scanner driver, PC-Fax Driver, printer status monitor, network scanner tool Lite .

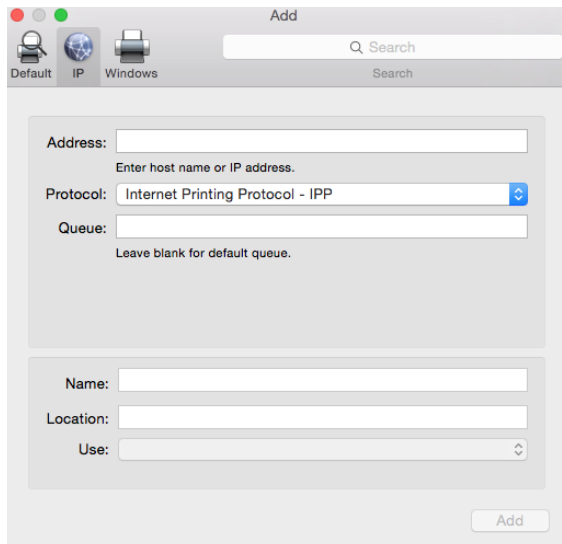
Using the IPP function to print

1. Display the [Printer browser] screen

Refer to steps 10-13 of p. 42 "Installation of printer driver on Mac OS X" for how to display the screen.

2. Click the [IP] icon

With Mac OS X 10.5/10.6/10.7/10.8/10.9/10.10, click the [IP] icon.



3. Select [IPP] for [Protocol]

4. Input [Address]

Input the IP address or domain name of this machine.

5. Input [ipp] in [Queue]

6. Select "Driver"

Select [Select software] from [Driver], then click the PPD driver of your model.

- With Mac OS X 10.5 - 10.9, select [Select driver used] from "Driver".
- With Mac OS X 10.4, select [Sharp] from "Driver used", then click the PPD driver of your model.

7. Click the [Add] button

When the "Options which can be installed" screen is displayed, confirm that it is correctly setup, then click the [Continue] or [OK] button.

8. Proceed with setup

For details "Installing the printer driver on Mac OS X P.41" refer to steps 7-9.

Related topics

- "Software CD-ROM" included in this machine P.6
- Operating environment of the computer P.8
- Conditions of software use P.10
- Installing the printer driver on Mac OS X P.41

Troubleshooting

- Cannot install P.46
- Trouble with Macintosh P.49
- How to setup this machine P.50

Troubleshooting

This section explains common concerns, questions and countermeasures when installing the printer driver or software.

Trouble with installation (Windows/Macintosh) P.46

- Cannot install P.46

Problem with Windows P.47

- Cannot detect this machine P.47
- The options and peripherals of this machine could not be automatically setup P.47
- I want to delete a software P.48

Trouble with Macintosh P.49

- Cannot detect this machine P.49
- I want to delete a software P.49

How to setup this machine P.50

- How to check the IP address of this machine P.50
- I want to check the status of the peripherals P.50

Trouble with installation (Windows/Macintosh)

! Cannot install

CHECK1

Does your computer have sufficient hard disk space to install the software?

Countermeasure

Delete unnecessary files and applications from your computer and increase space on your hard disk.

CHECK2

Are you using an OS that cannot be used with the software that you are trying to install?

Countermeasure

Check whether the software you are trying to install, works on the OS of your computer.

⇒ "Operating environment of the computer P.8", "Conditions of software use P.10"

Problem with Windows

! Cannot detect this machine

CHECK1

Is your computer connected to the same network as this machine?

Countermeasure

The computer and this machine must be connected on the same LAN to be detected. When they are connected to a different subnetwork, click the [Specify conditions] button and input the name of this machine (host name) or IP address and search again.

CHECK2

Are the computer and machine connected correctly?

Countermeasure

Check whether the LAN connector of the computer and this machine is connected correctly. Also check the hub side of the LAN cable.
⇒ "[How to connect this machine P.11](#)"

CHECK3

Is the power turned on for the printer?

Countermeasure

If the printer is not turned on, it will not be detected. If the printer is not on, use the main power switch, then the [Power] key to turn the power on to search the machine again.

! The options and peripherals of this machine could not be automatically setup

CHECK

If automatic setup of the options and peripherals is not possible, setup manually.

Countermeasure

- To setup the options ⇒ Enable options and peripherals P.31
- Check the status of the attached peripherals following the steps below and setup the options.
- 1) Print "All setup list" of system setup, and check the setup of peripherals and trays. To print the "All setup list", press the [System setup] key, then the [Data list print] key → [All setup list].
Select the number of trays for [Paper feeder option].
 - 2) Click the following buttons to check the setup: [Tray setup], [Paper type name setup], [Continuous printing setup].
Tray setup: Reflects the "Paper feed tray setup" of the system setup. Specify the paper size and type for each tray.
Paper type name setup: Reflects the "Paper type registration" of the system setup. When the type name of the user type is changed, input the new name.
Continuous printing setup: Input the system setup (Administrator) "Continuous printing setup" for this machine (IP address of the child machine). "Continuous printing setup" can only be setup when [LPR direct (specify address/Auto search)] is selected.

! I want to delete a software

CHECK

To delete the printer driver and software that has been installed using the installer, follow the steps below.

Countermeasure

- 1) Click the [Start] button, then click the [Control panel]
With Windows 8, right click at the start screen (or swipe upwards from the lower edge), then click → App bar → [All applications] → [Control panel].
- 2) Click [Uninstall program]
- 3) Select the driver or software that you want to delete from the list
For details, refer to the manual of your OS or help.
- 4) Restart the computer

Trouble with Macintosh

! Cannot detect this machine

CHECK1

Is the power turned on for the printer?

Countermeasure

If the printer is not turned on, it will not be detected. If the printer is not on, use the main power switch, then the [Power] key to turn the power on.

CHECK2

Are the computer and machine connected correctly?

Countermeasure

Check whether the LAN connector of the computer and this machine is connected correctly. Also check the hub side of the LAN cable.
⇒ "[How to connect this machine P.11](#)"

! I want to delete a software

CHECK1

Is the power turned on for the printer?

Countermeasure

Delete the printer that uses the PPD driver of this machine from the printer list. How to display the printer list ⇒ "[Installing the printer driver on Mac OS X P.41](#)"

How to setup this machine

! How to check the IP address of this machine

CHECK1

You can check the IP address of this machine by printing the "All setup list".

Countermeasure

To print the "All setup list", press [System setup] → [Data list print] → [All setup list].

! I want to check the status of the peripherals

CHECK

Check the status of the peripherals following the steps below:

Countermeasure

Print [All setup list]. At setup, press [System setup], [Data list print] → [All setup list] to print. Select the number of trays for the [Paper feeder option].